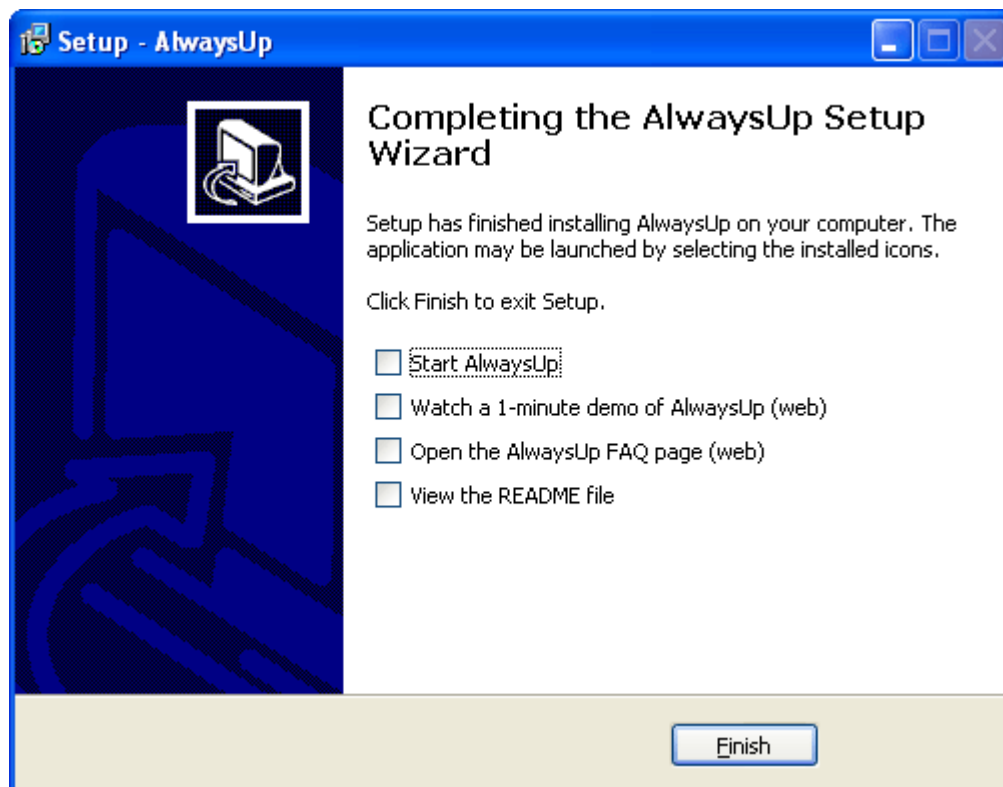
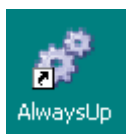


## Registering AlwaysUp (GUI) Using Softstuf OEM License

1. Download and Save the Always Up.zip file to a local folder on the Wavewin computer.
2. Open the zip file and extract the contents to the local folder where the Always Up.zip file is located.
3. Run the AlwaysUp\_Installer.exe file. Follow the steps for the installation. **Note:** Make sure the Start AlwaysUp check box is not checked on the last page of the installation. The license file needs to be copied to the Always Up folder.



4. Copy the alwaysup.dat license file to the AlwaysUp install path, c:\Program Files\AlwaysUp.
5. Run AlwaysUp. A desktop icon was created during the installation.



6. To confirm the registration was successful, select "About" from the "Help" menu. The "License information" section should display Softstuf license details.

